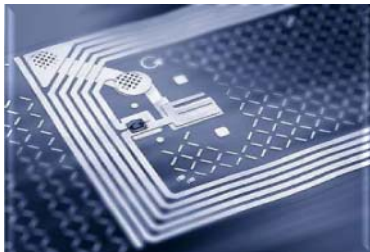


EXCELLIS

SUPPLY CHAIN - RFID APPAREL & FOOTWEAR



Empower Your Business:

Apparel & Footwear Organizations around the world are leveraging item-level RFID enabled solutions to deliver measurable value today. RFID enabled item-level solutions enable organizations to dramatically improve inventory accuracy and visibility resulting in increased on-floor availability, up-selling and cross-selling opportunities, and increased sell-through while minimizing price markdowns. This directly results in increased sales and customer service for these organizations.

RFID enabled item-level solutions also enable retailers to dramatically increase the accuracy of cycle counts, receiving, and replenishment activities while at the same time decrease the labor costs associated with these activities. With RFID's ability to improve visibility and access to product information, retail and apparel organizations can focus their resources on customer facing and sales activities.

Our RFID enabled item-level retail solutions are designed enable you to increased visibility of your inventory as it moves around your supply chain. Our solutions have enabled our customers to monitor and track a product's whereabouts, enabling visibility from the distribution center, to the back of the store, to the shelf. Our RFID solutions are custom engineered to help you:

- Increase top line sales by increasing sell-through, up-selling/cross-selling, & minimizing price markdowns
- Improve inventory accuracy and visibility through real-time inventory management
- The ability to replenish shelves more quickly with inventory management processes
- Automate shipping and receiving to enable sales staff to concentrate on selling
- Improve customer service by reducing customer wait times throughout the shopping experience
- Reduce shrink, both internal and external

Our Offerings:

Excellis offers a comprehensive suite of services for our retail customers, spanning business case development, and solution design, to solution configuration, deployment and post deployment support services.

Excellis provides a seamless and customized approach to enabling RFID item-level apparel and footwear solutions. Depending on your organization's specific needs, we design the solution to include a variety of components including mobile readers and fixed infrastructure solutions (smart shelves, impact doors, POS stations). Our experts will help you design the solution that is most appropriate for you to allow you to realize the greatest ROI and functional solution.





EXCELLIS

SUPPLY CHAIN - RFID APPAREL & FOOTWEAR



Our Partners:

Our eco-system of best of breed partners allows us to deliver a RFID enabled item level retail and apparel solution that provides our clients with the high value and tangible ROI. Excellis has a comprehensive suite of partners specializing in a variety of RFID products and services which complement our capabilities and enable us to provide you with an industry leading solution. Our key partners include:

	<p>Vue Technology is the leading provider of item-level RFID SW & infrastructure, with over six years of in-store and supply chain experience delivering measurable value through improved inventory visibility for clients in Apparel, Footwear, Books, Media & Entertainment and Retail Pharmacy.</p>
	<p>Motorola can help you connect simply and seamlessly to the people and information that drives your business. With an innovative portfolio of RFID readers and antennas, our high-performance solutions help retailers, distributors, and manufacturers across the globe gain increased visibility through automation. In addition, our full portfolio of mobility products—including wireless infrastructure, advanced data capture, and mobile computing devices— can complement and extend the benefits of RFID across your operations, enabling a complete enterprise mobility solution for your business.</p>
	<p>At Avery Dennison RFID, we focus on the design and manufacture of Radio Frequency IDentification (RFID) inlays – a critical link between the tagged item and the hardware, software and databases in an RFID application.</p>
	<p>RFID Sherpas is a management consulting practice focused exclusively on the retail sector. The company serves a global base of retailers, merchandise vendors, technology providers and industry associations as an advisor on all facets of Retail RFID, including matters of strategy, project design, implementation, and business case analysis.</p>

About Excellis

Excellis is a leading System integrator composed of an elite group of Business and IT associates, who provide broad-based RFID, ERP, Web technology and management consulting services. They embody an integrated business suite of practices including: ERP, eServices, ePedigree, Supply Chain and Business intelligence, and provide services offerings aimed at the Retail, Pharmaceutical and Manufacturing industries. Excellis is privately held with offices located in Philadelphia, PA, Chicago, IL, Princeton, NJ and Toronto, Ontario, Canada.

email: RFID@excelliscorp.com

Phone: 609-275-1220

web: www.excelliscorp.com